

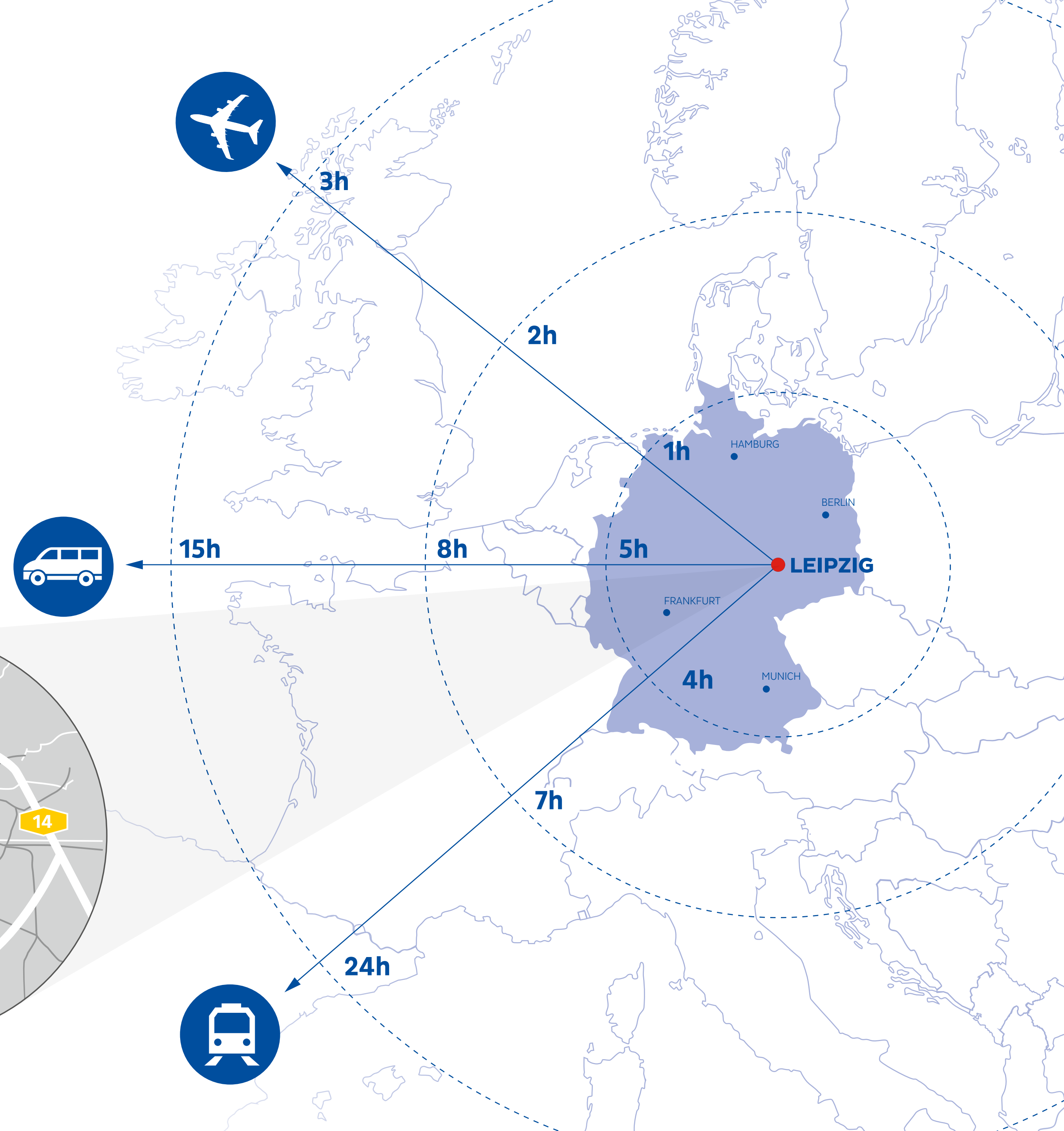
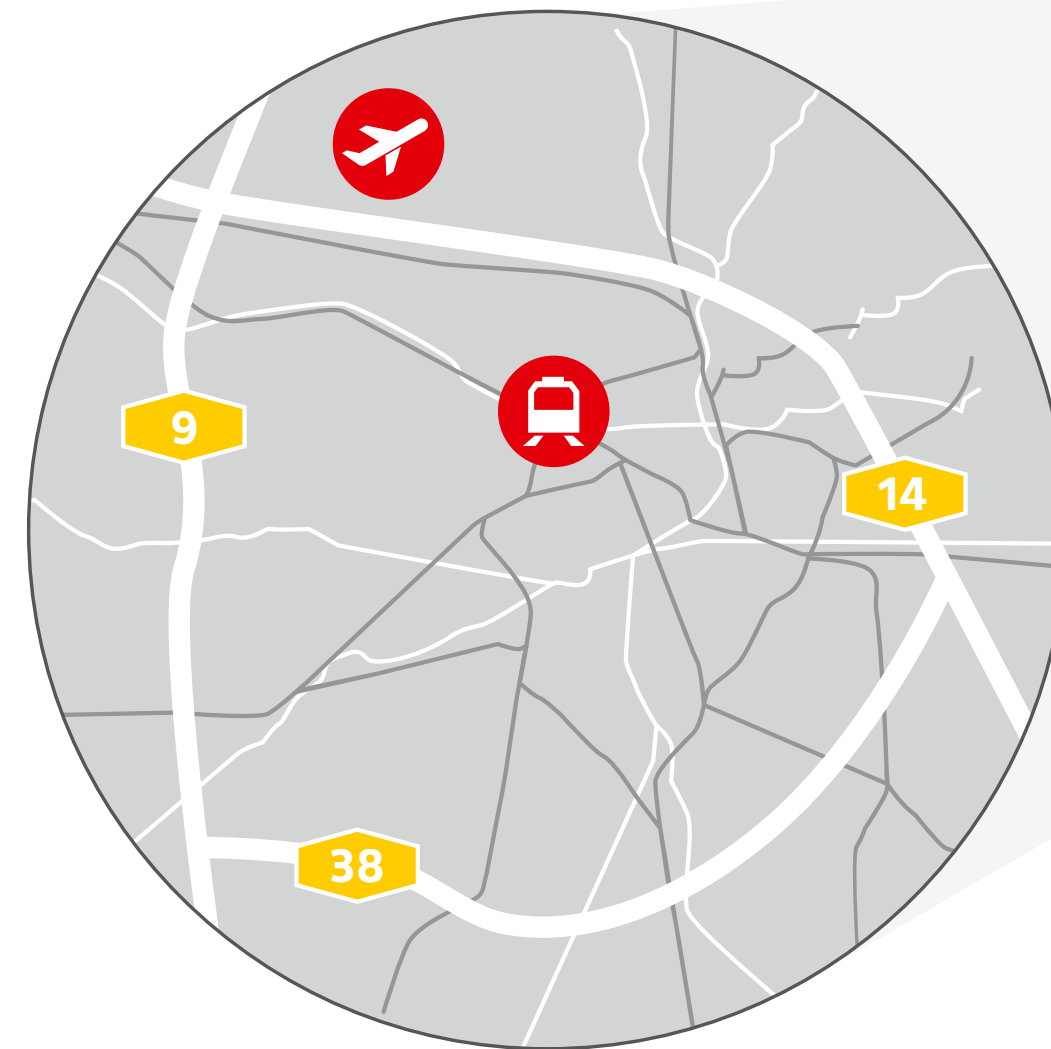
LEIPZIG

City of Change



Leipzig, the cultural and economic center in the heart of Europe

- Berlin: 1h
- Frankfurt, Hamburg, Munich: 3h





Epicenter of a historical world upheaval

- October 9th 1989: 70,000 people demonstrated on the streets of Leipzig for democracy and for the improvement of their living conditions.





Leipzigs Growth: #1 in Germany



+ 23% since 2005

+ 16% to 2035





Leipzig economy:

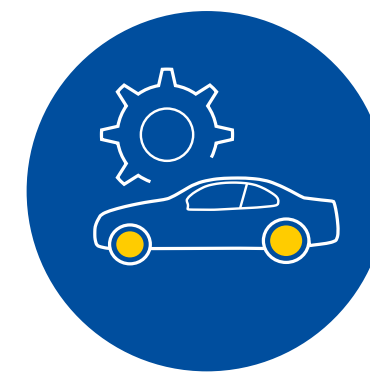
+ 41 % Employees since 2005



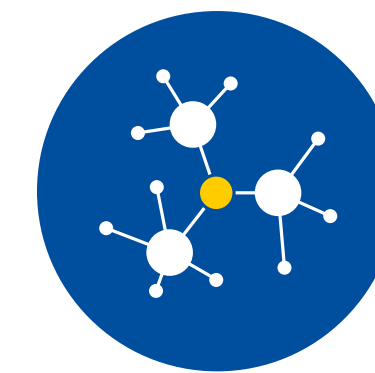
Economic growth

1,7 % in Germany

3,4 % in Leipzig



Automotive & supply industry



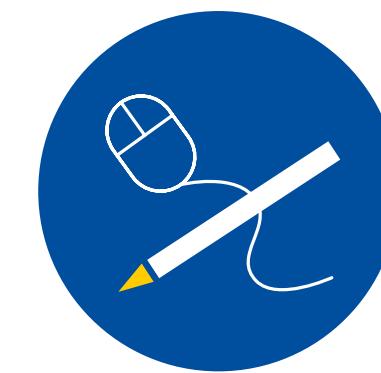
Health industry & Biotechnology



Energy & environmental engineering



Logistics



IT, media & creative industry



At the crossroads of the energy future

Leipzig is a modern energy center with a wide range of services:



→ Power engineering and generation



→ European Energy Exchange



→ Storage and Energy saving technologies



→ Energy-related services





Designer of the energy revolution

The exit from the brown coal industry is in full swing.





Research for a clean environment

Leipzig research facilities for environmental technology and bio economics cooperate together in various science parks.

- Helmholtz center for environmental research
- German biomass research center
- German center for integrative biodiversity research
- Institute for research of final disposal of radioactive waste (in planning)





In the fast lane

1,500 vehicles daily

27,000 employees work today in the automotive and supply industry.



70%
of all Porsches are „Made in Leipzig“



150.000
BMW i3 from Leipzig



Logistics center – just in time and global



Leipzig/Halle Airport

- 24/7 Airport
- DHL, largest global hub
- AirCargo:
#2 in Germany, #5 in Europe



Rail freight center

- Logistics for the seaports of Hamburg, Bremen, Rotterdam and Southeast Europe
- Handling of block trains to Shenyang and Munich/Verona



Road freight transport

- Motorway ring around Leipzig
A9 is a main North/South German thoroughfare



Top notch medical facilities in the heart the city

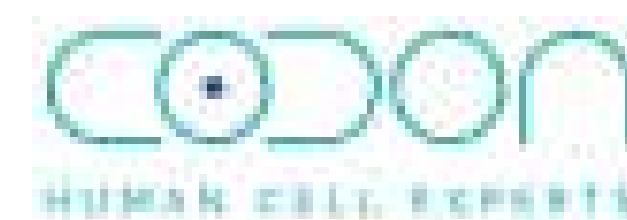
- Over 600 year old medical school
- Medical research:
 - Civilization diseases
 - Neurosciences
 - cell and organ replacement therapy
 - psychosocial medicine
- The Leipzig heart center is internationally recognized:
surgery and cardiology



BioCity Campus – Innovations for a healthier life

Market and demand conform development of cell therapeutics

- Fraunhofer Institute for Cell Therapy and Immunology: in a clinical cooperation with Novartis the first approved cell therapy for blood cancer in Europe was produced
- CO.DON AG: Establishment of the largest and most modern production facility in Europe for human cells for knee cartilage regeneration





One of the most modern chemical locations worldwide

- Chemical and plastic industry with over 100 years of tradition
- Regional chemical research triangle with over 750 companies



On the road to the digital future

- Digital business models are driving the lively Leipzig start-up scene
- HHL - Leipzig Graduate School of Management and partners from the business community support the young, tech-savvy entrepreneurial community

de:hub
digital ecosystems

BASISLABER

ugb

SOCIAL
IMPACT
LAB

HHL

SPINLAB





Leipzig trade fairs – over 800 years of business with the world

- Clear profile: trade fairs and public fairs
- Attractive linking between trade fairs and business congresses
- International Transport Forum with 65 member states:
The annual World Summit of Transport Ministers is the communication platform of the transport sector



**LEIPZIGER
MESSE**



University, 600 years of research and teaching

- 40,000 students
- 2nd oldest German university
- 8 colleges
- HHL, the worlds oldest Business School
- International School





Music metropolis with an European Heritage Label



EUROPEAN
HERITAGE LABEL





World art and local color



- Leipzig School - internationally sought-after paintings with high symbolic value
- Museum of fine arts:
Peace is Power - exhibition of works by Yoko Ono



15,700 cultural monuments

- One of the most attractive city centers in the whole of Germany.





Top performance in international sports competitions

- RB Leipzig - German Soccer League and European Champions League
- Tokyo 2020 - Training goal for Leipzig Athletes





Thank you very much for your attention

City of Leipzig
Office for Economic Development

CLEMENS SCHÜLKE
Head of the Office for Economic
Development

Martin-Luther-Ring 4-6
04109 Leipzig
+ 49341 123 5810
clemens.schuelke@leipzig.de

www.leipzig.de

